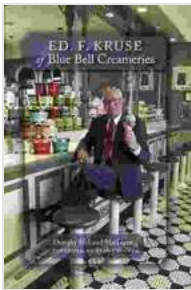


Ed Kruse: The Visionary Behind Blue Bell Creameries

In the annals of American business, Ed Kruse stands as a shining example of how vision, innovation, and unwavering commitment can transform a small-town enterprise into a beloved national brand. As the founder of Blue Bell Creameries, Kruse revolutionized the ice cream industry, bringing joy and sweet memories to generations of Americans.

Early Life and Inspiration

Ed Kruse was born in Brenham, Texas, in 1920. Growing up on a dairy farm, he developed a deep appreciation for the value of fresh, wholesome ingredients. After graduating from Texas A&M University in 1942, Kruse served in the U.S. Army during World War II.



Ed. F. Kruse of Blue Bell Creameries by Randall E. Stross

★★★★★ 5 out of 5

Language : English
File size : 11855 KB
Text-to-Speech : Enabled
Screen Reader : Supported
Enhanced typesetting : Enabled
Word Wise : Enabled
Print length : 207 pages



It was during his time in the service that Kruse's entrepreneurial spirit was ignited. While stationed in the Pacific, he observed the popularity of ice cream among the troops and realized its potential as a business

opportunity. When he returned home after the war, Kruse decided to pursue his dream of starting an ice cream company.

Foundation of Blue Bell Creameries

In 1945, Kruse partnered with Dr. R.E. Smith, a local veterinarian, to establish Blue Bell Creameries in Brenham. The duo began by producing small batches of ice cream using fresh milk and cream from local dairy farmers. Their commitment to quality and innovative flavors quickly caught the attention of the community.

In 1950, Blue Bell launched its iconic "Blue Bunny" logo, featuring a cheerful cartoon rabbit holding an ice cream cone. The logo resonated with consumers and became synonymous with the brand.

Innovation and Expansion

Kruse was always pushing the boundaries of ice cream innovation. He introduced new flavors, such as Homemade Vanilla, Chocolate Overload, and Blue Monster, that quickly became favorites. He also experimented with different ingredients and technologies, including using liquid nitrogen to create creamier ice cream.

As the demand for Blue Bell ice cream grew, Kruse expanded the company's operations. In the 1960s and 1970s, Blue Bell opened new production facilities in Texas and Oklahoma. The company also began distributing its ice cream to other states across the South and Midwest.

Building a Legacy

Under Kruse's leadership, Blue Bell Creameries became one of the most recognized and trusted brands in the ice cream industry. His unwavering

commitment to quality and customer satisfaction earned the company a loyal following.

Beyond his business success, Kruse was also known for his philanthropy and community involvement. He supported local charities and educational institutions, and was instrumental in bringing professional baseball to Brenham.

In 1987, Kruse retired as chairman of Blue Bell Creameries, but his legacy continued. The company remained a family-owned business, guided by his principles of innovation, quality, and customer service.

Impact and Legacy

Ed Kruse passed away in 2015 at the age of 95. His impact on the ice cream industry is immeasurable. Blue Bell Creameries, which he founded, continues to thrive as one of the most beloved American brands.

Kruse's legacy extends beyond the frozen treats he created. He demonstrated the power of vision, perseverance, and unwavering commitment to quality. His story is an inspiration to entrepreneurs and business leaders alike, reminding us that with passion and innovation, we can make our dreams a reality.

Ed Kruse, the founder of Blue Bell Creameries, was more than just a successful entrepreneur. He was a visionary who revolutionized the ice cream industry, a philanthropist who gave back to his community, and a mentor who inspired countless others.

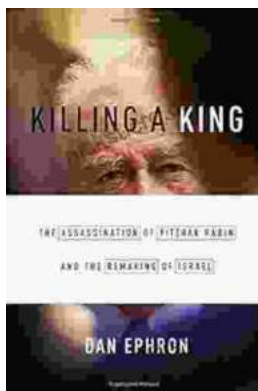
The legacy of Ed Kruse lives on through the millions of families who have enjoyed Blue Bell ice cream over the generations. His sweet creations and unwavering commitment to quality continue to bring joy and cherished memories to every scoop.



Ed. F. Kruse of Blue Bell Creameries by Randall E. Stross

★★★★★ 5 out of 5

Language : English
File size : 11855 KB
Text-to-Speech : Enabled
Screen Reader : Supported
Enhanced typesetting : Enabled
Word Wise : Enabled
Print length : 207 pages



Killing A King: The Assassination Of Yitzhak Rabin And The Remaking Of Israel

The Assassination Of Yitzhak Rabin And The Remaking Of Israel ## **
An Event That Reshaped a Nation's Destiny ** On an autumn evening in 1995, a single shot shattered...



Death in Benin: Where Science Meets Voodoo

In the West African nation of Benin, death is not simply the end of life. It is a complex and mysterious process that is believed to involve both the physical and spiritual...